

The ISAN logo consists of the word "ISAN" in a bold, blue, sans-serif font, with a stylized blue wave-like graphic element integrated into the letter 'S'. The text is set against a solid orange rectangular background.

TERMO

ECO & SAFE | VOLTAGE 24

New

New Practic

Revolution in trench heaters

- **The thermostat is the controller** No other controllers are required
- **Optimum heating according to the needs of the user** Variable speed control
- **Economic operation** Energy consumption in units of watts
- **Safety** Only safe direct voltage of 24V DC inside the convector
- **Wide range of products** With or without fan, atypical designs, lots of models
- **Variable installation** Low-temperature systems, BMS (Building Management System) ...
- **Grills according to the customer's choice** Large selection of grills, both roll-up and linear, anodized aluminium, wooden, stainless steel

New Practic

REVOLUTION IN TRENCH HEATERS



NATURAL CONVECTION



WITH TANGENTIAL FANS



NEW PRACTIC trench heaters are ideal products suitable for **modern building complexes, low-energy** and **passive houses** and for „**Green Energy**“ projects. The new series is designed exclusively for the safe voltage of **24V DC**.

NEW PRACTIC trench heaters with intelligent control guarantee comfortable heating. The thermostat analyses and interprets the current room temperature and **continuously controls the fan speed** in the trench heaters and also controls the flow of the heating medium. An integrated algorithm optimizes the operation of the floor convector thus guaranteeing efficient heating and minimum heat loss.

Control

Control device

- Heating / Cooling (Auto/Manual)
- 2 Pipe / 4 Pipe (Auto/Manual)
- 7-Days Time Program
- Continual Fan Controlling
- Backlit LCD



Optional

- Remote Control
- External Sensor
- Heat Medium Temp. Sensor

EC technology

This technical advancement affects all areas of human activity and enables the requirements for low energy consumption and safety of devices to be met. Modern 24V DC fans with electronically commutated (EC) motors are among the most important elements of the trench heaters.

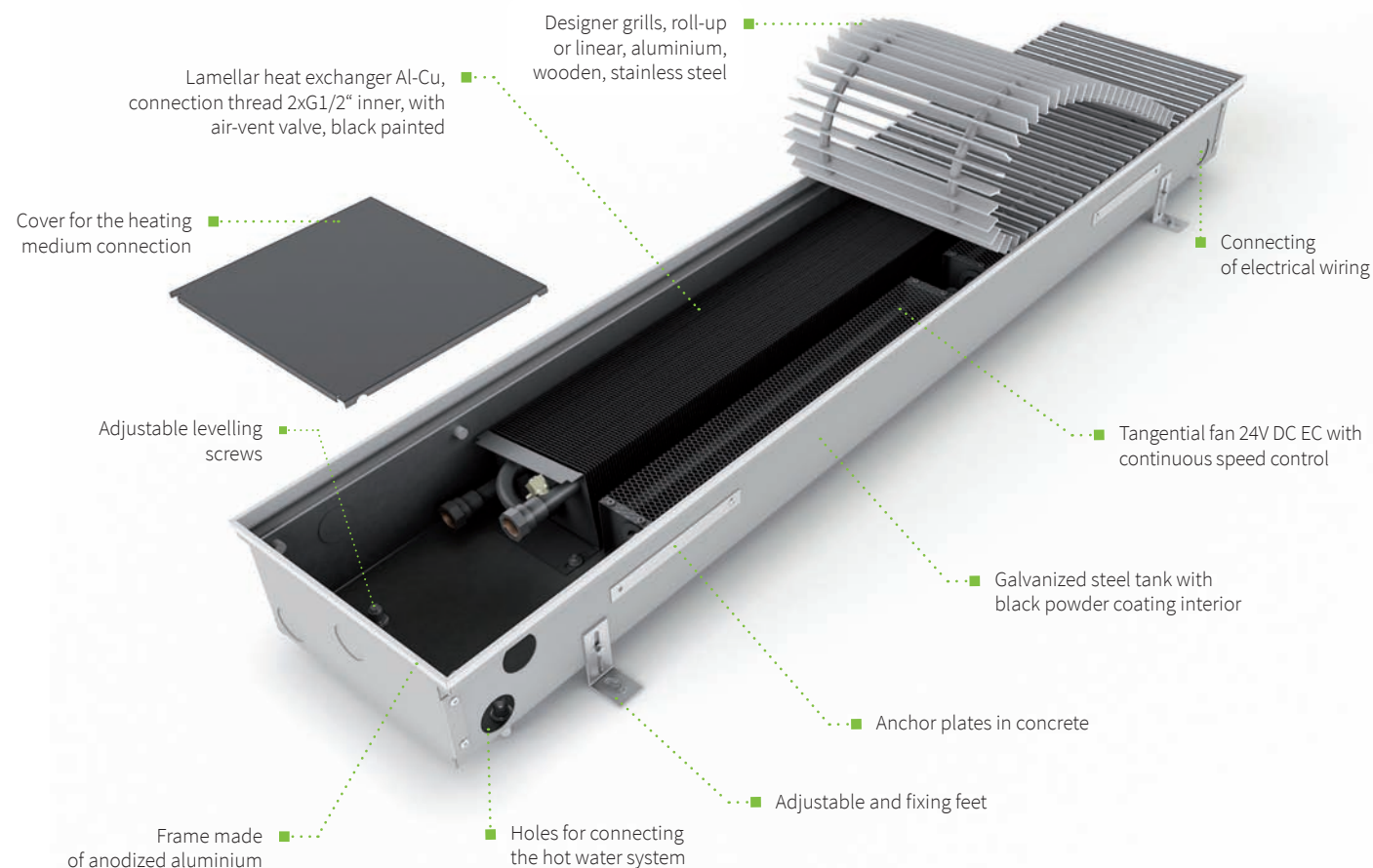
Properties of 24V DC EC FANS

- Safe voltage of 24V DC
- Remarkably low energy consumption, calculated in units of watts
- Comfortable continuous speed control using a voltage of 0 ... 10V DC
- Smooth start with a pulse to start the motor at low speeds
- Protection function when the rotor is stopped by an outside influence
- Synchronization of fan speeds
- Long service life of the motor with electronic control
- Simple implementation into complex control systems



The fans in New Practic convectors with their impellers cover the entire length of the exchanger. Even at low speeds they achieve optimum performance and a quiet operation.

Construction





Grills

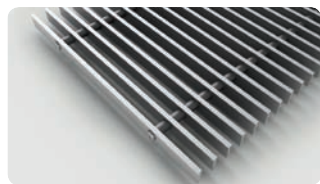
Aluminium Grills

ROLL-UP ALUMINIUM GRILLS

The spacing between spring loaded transverse lamellas of aluminium alloy is delimited by rollers made of cured plastic. The lamellas have anodized and tinted surface. Any RAL shade may be reached by powder colour coating.

LINEAR ALUMINIUM GRILLS

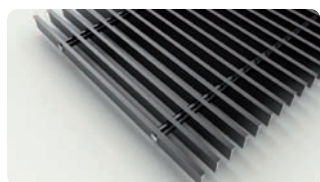
Lengthwise perforated aluminium lamellas are linked by carrying steel bar. Rollers of cured plastic delimitate the spacing.



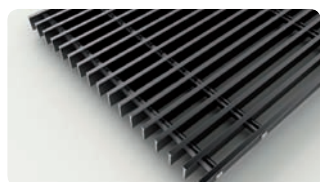
Al-natur roll-up



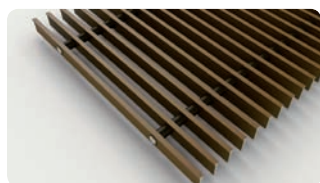
Al-natur linear



Al-black roll-up



Al-black linear



Al-bronze roll-up

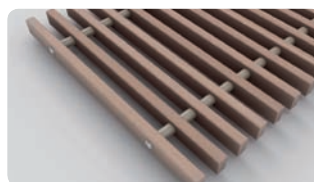


Al-bronze linear

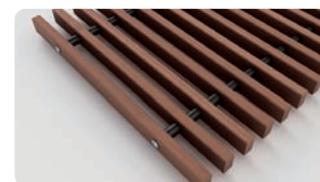
Wooden Grills

ROLL-UP WOODEN GRILLS

The spacing between spring loaded oak or beech lamellas is delimited by rollers made of cured plastic. The surface is raw or stained.



Beech natur roll-up



Beech stained roll-up



Oak natur roll-up

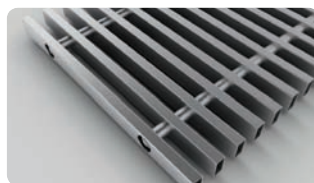


Oak stained roll-up

Stainles Steel Grills

ROLL-UP STAINLESS STEEL GRILL

The spacing between spring loaded transverse lamellas of Stainless Steel is delimited by rollers made of cured plastic.



Stainless Steel roll-up