



Heating for heat pumps

Heat pumps are a great choice for low-temperature gradient systems. We recommend combining them with heating units capable of efficiently utilizing low water temperatures to heat the room quickly and effectively.

ISAN can provide you with comprehensive solutions

- + a wide range of heating units compatible with heat pumps
- + our units are capable of both heating and cooling
- + a range of options for connecting to the heating system
- + wide shape and design variability to make them a great fit for anyone

Advantages of low-temperature gradient heating units



fast and efficient low temperature heating



comfortable heating in winter and cooling in summer



cost effective



variable heat source utilization



environmentally friendly



energy saving

Fan-operated units

Our innovative fans, integrated into the heating units, increase both the efficiency and heating performance. This makes them well suited for combined operation with heat pumps.

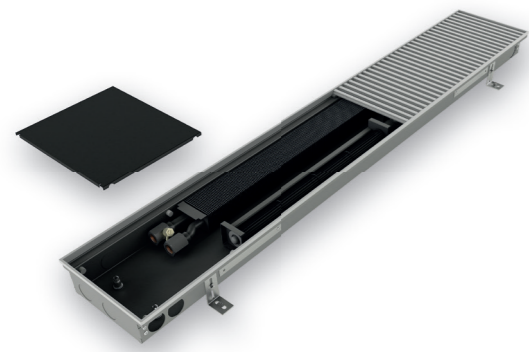
Termo trench heaters

Fan assisted trench heaters feature improved heat transfer, greater control, comfort, and system efficiency. By directly facilitating air flow, the fan increases the rate of heat transfer to the room for uniform heat distribution.

Termo – FRT

Fan-assisted and lamellar heat-exchanger convection heaters

- + high heat output
- + seamless speed control
- + quiet operation



Termo – FRZ

Fan-assisted convection heaters with an installed power supply

- + easy connection of multiple convectors
- + connected over long distances



Heating and cooling units

The heat pump can provide both heat and cooling. It is best for heat pumps to utilize large surface cooling systems, such as floor or ceiling cooling.

Termo trench heaters

Fan-forced convection trench heaters excel in high heating and cooling performance. They provide a practical addition to cooling and air-conditioning systems with insufficient capacity to reach window surfaces. Fans with variable speed control and low power consumption provide optimum forced convection control.

Termo – FRC / FRD

Fan-assisted heating and cooling convection heaters

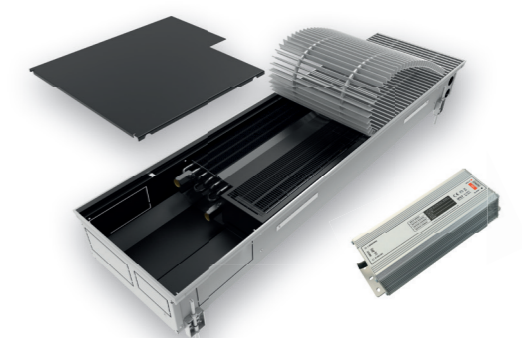
- + high heating and cooling performance
- + energy-saving 24 V DC fans
- + 0...10 V DC continuous speed control
- + can be equipped with a condensate pump



Termo - FZC / FZD

Fan-assisted convection heaters with an installed power supply

- + easy connection of multiple convectors
- + long-distance connection options
- + negligible line voltage drops



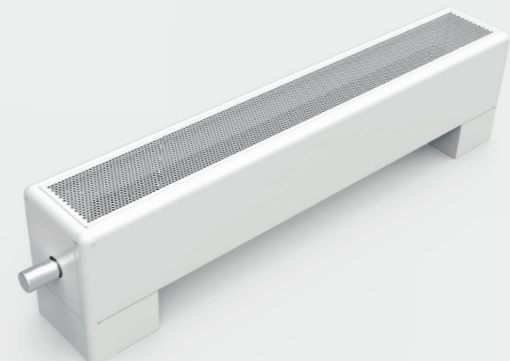
Ecolite lamellar heat-exchanger convector heater

Important features of lamellar heat-exchanger heaters include their low surface temperature and the option to select round-corner models that are ideal for children's rooms and other settings where increased safety is a concern. High-performance models with modern tangential 24 V DC EC ventilators allow for integration with low-temperature heating systems making use of thermal pumps and other ecological heating sources.

Ecolite TZT / LZT / TST / LST

Fan assisted heaters

- + sufficient heat output when combined with heat pumps
- + thermostat for steady fan speed control
- + quick response to room temperature changes
- + wall or floor installation options
- + rounded edges on TZT, TST models for accident prevention



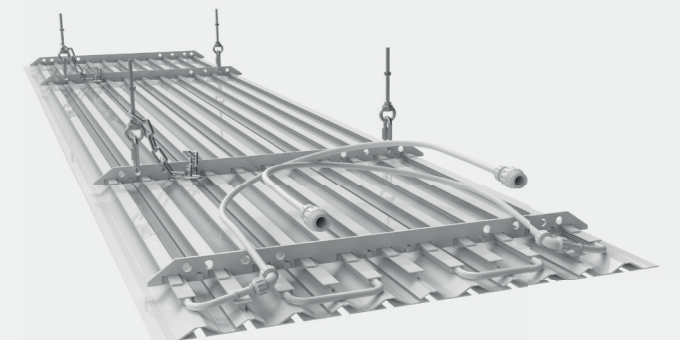
SOFITO Ceiling Panels

Radiant interior heating and cooling is natural, using a large surface area to yield a greater cooling and heating capacity. Aluminum sections have excellent thermal conductivity to ensure a quick response time in contrast to standard ceiling cooling. Condensation-free heating and cooling has to contend with smaller temperature differences with respect to the surrounding areas, making it ideal for the application of heat pumps and renewable energy sources.

Sofito

Both heating and cooling ceiling panels

- + heating / cooling
- + quick response to changes in ambient temperature
- + space saving
- + easy, quick and dust-free installation



Optimally shaped units

The shape of the radiator is designed and optimized to make the most efficient use of the lower water temperature and to produce sufficient output to heat the interior.

Atol column radiators

ATOL column radiators are an ideal alternative to classic cast iron radiators. Their smooth surface and rounded sections allow for easy maintenance, cleaning and safety. Models fitted with a solid wooden top or curved models to match the wall shape provide practical solutions. ATOL radiators feature optimum heating fluid circulation with high heat-transfer efficiency. They are also well suited for low-temperature systems.

- + high heat output
- + superior heating fluid circulation
- + smooth surface
- + easy maintenance
- + rounded sections to minimize the risk of injury



Spiral ribbed-tube radiators

The history of ribbed-tube radiators goes back a long time. They find their application in both modern and historical buildings. Apart from their design, their distinct advantages include long service life, high heat output and variability in both type and size. The vertical design is also compatible with heat pumps, making them ideal for use in low-energy and passive homes.

- + type and size variability
- + retro design
- + long service life
- + high performance



Melody bathroom radiators

Our widest product range offers more than 80 radiator models for bathrooms as well as residential and office space. It includes water and electric heaters that come in a broad selection of shapes, sizes and connection options. Our customers welcome the wide range of colors available and the opportunity to choose their own front panel print design, including photographs.

- + a wide range of heating units suitable for a low-heat gradient
- + design and size variability of heating units

