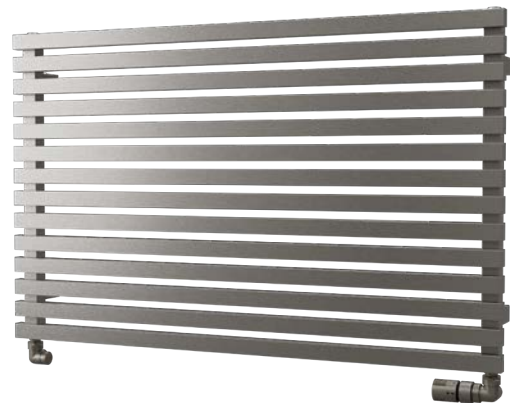


Zoya Inox



Composed of 14 vertically positioned sections, this horizontal radiator offers an interesting solution for every interior. The combination of section layout and brushed stainless steel makes this radiator well suited for environments with residual humidity. The unit provides high performance while taking up a minimum of space. It is ideal for installation under windows in kitchens, offices and other rooms.

Material	horizontal stainless steel profiles 30×20 mm stainless steel profiles 30×30 mm
Connection threads	4×G1/2"
Testing overpressure	1,3 MPa
Max. op. overpressure	1,0 MPa
Max. op. temperature	95 °C
Number of pipes	14



1.

Zoya Inox



1. Zoya Inox / 2. Zoya Inox

Modification options

Modification options	Zoya Inox
Surface treatment	brushed Inox
Height range [mm]	NO
Length range [mm]	1000-1800 (increase of 10)
Dimension changes	YES (additional charge of 30 % ¹⁾)
Electric version	NO
Standard connection (SK)	STANDARD
Middle connection (SM)	NO
Side connection (SB)	NO
One-sided into space fixing	NO

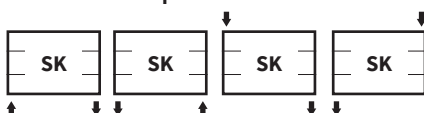
Zoya Inox

Accessories



Thermostatic packs

Connection Options



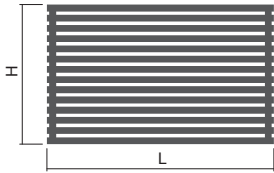
¹⁾ to the nearest larger standard dimension



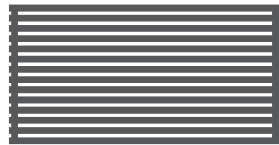
Height (H) Length (L) [mm]	Depth (B)	Weight	Water capacity	Temperature exponent	Output 75/65/20°C	Power input Z heat rod, Mini PW, Vision	Power input Solo, Rio, Neo	Connection span (Z)	Inox	Electric
code	[mm]	[kg]	[l]	[°]	[W]	[W]	[W]	[mm]		
DXZY 0615 1000	68	16,7	7,3	1,300	469	-	-	950	✓	-
DXZY 0615 1200	68	19,9	8,6	1,300	561	-	-	1150	✓	-

The weight of radiators does not include water and packaging.

Type height (H) / length (L) [mm]

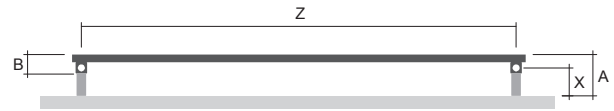


H: 1000
L: 0615

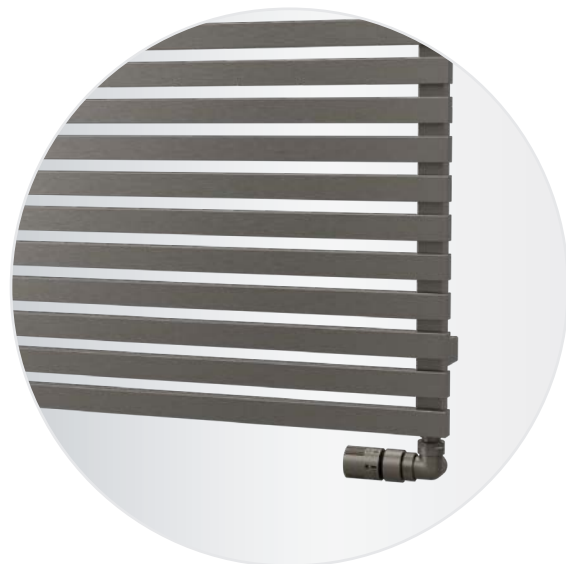


H: 1200
L: 0615

Mounting



Type	X [mm]	A [mm]
Metal brackets	74-84	109-119



Zoya Inox