

Duo



Duo is a conventional pipe radiator with robust profiles suitable for use in the bathroom. The doubling of the heating surface allows the radiator to achieve a high heat output, enhancing the thermal comfort of any room. The perpendicular-to-wall mounting option will visually separate the toilet from the rest of the bathroom.

Material	steel profiles 30×70 mm / steel pipes Ø 26 mm
Connection threads	2× G1/2"
Testing overpressure	0,65 MPa
Max. op. overpressure	0,5 MPa
Max. op. temperature	110 °C
Number of pipes	43, 62



1.






1. Duo – silver S05 [64]/ 2. Duo – snow white RAL9016 [01]

Modification options

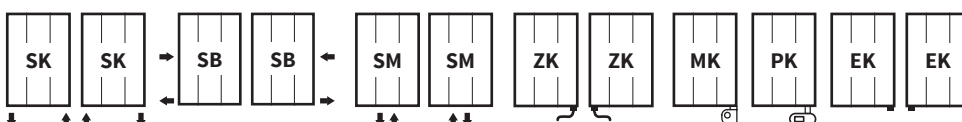
Duo

Surface treatment	colour
Height range [mm]	600-1770 (increase of 45)
Length range [mm]	400-600 (increase of 10)
Dimension changes	YES (additional charge of 30% ¹⁾)
Electric version	YES
Standard connection (SK)	STANDARD
Middle connection (SM)	YES (additional charge)
Side connection (SB)	YES (additional charge)
One-sided into space fixing	YES (additional charge)

Accessories

-  Colour ref. chart
-  Thermostatic packs
-  Electric regulators

Connection Options



¹⁾ to the nearest larger standard dimension

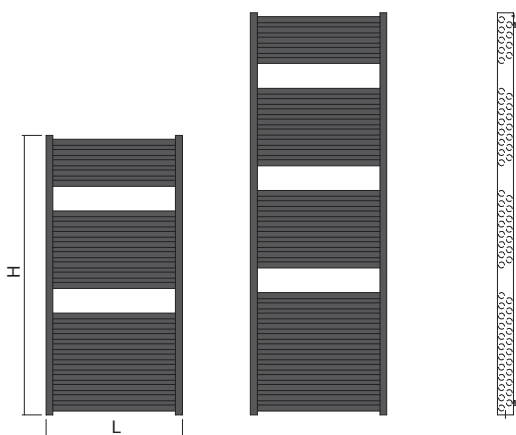
Duo



Height (H) Length (L) [mm]	Depth (B)	Weight	Water capacity	Temperature exponent	Output 75/65/20°C	Power input Z heat rod, Mini PW, Vision	Power input Solo, Rio, Neo	Connection span (Z)	White colour RAL 9016	Electric
code	[mm]	[kg]	[l]	[-]	[W]	[W]	[W]	[mm]		
DDUO 1230 0600	70	25,1	13,9	1,289	985	1000	1000	570	✓	✓
DDUO 1770 0600	70	36,0	20,0	1,235	1210	1200	1200	570	✓	✓

The weight of radiators does not include water and packaging.

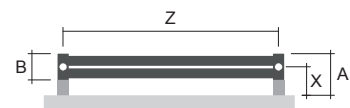
Type height (H) / length (L) [mm]



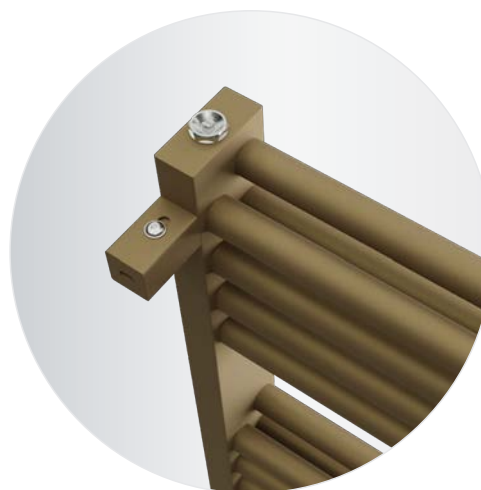
H: 1230
L: 0600

H: 1770
L: 0600

Mounting



Type	X [mm]	A [mm]
Metal brackets	75-85	110-120



Duo - sandstone S13 [72]

