

# Corint Inox



Corint Inox is a high-end heater made of durable brushed stainless steel to guarantee its long service life. Its minimalist design will stand out in any space. An ideal choice for those looking for superior quality and distinctive style.

Material	stainless steel profiles 30×30 mm / stainless steel pipes Ø 40 mm
Connection threads	2× G1/2"
Testing overpressure	1,3 MPa
Max. op. overpressure	1,0 MPa
Max. op. temperature	95 °C
Number of pipes	8



1.

Corint Inox



2.

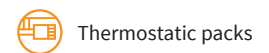
1. Corint Inox/ 2. Corint Inox

## Modification options

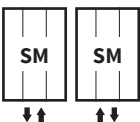
Surface treatment	brushed polished stainless steel
Height range [mm]	600-1800 (increase of 10)
Length range [mm]	322-839 (increase of 47)
Dimension changes	YES (additional charge of 30% <sup>1)</sup> )
Electric version	NO
Middle connection (SM)	STANDARD
Side connection (SB)	NO
One-sided into space fixing	NO

## Corint Inox

## Accessories



## Connection Options



<sup>1)</sup> to the nearest larger standard dimension

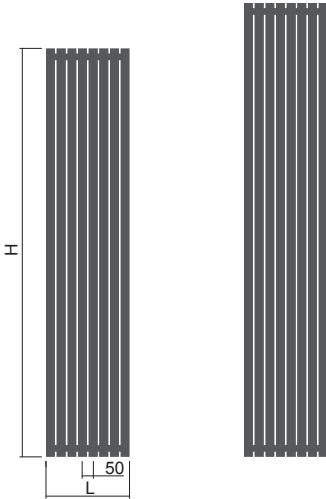
# Corint Inox



Height (H) Length (L) [mm]	Depth (B)	Weight	Water capacity	Temperature exponent	Output 75/65/20°C	Power input Z heat rod, Mini PW, Vision	Power input Solo, Rio, Neo	Connection span (Z)	Inox	Electric
code	[mm]	[kg]	[l]	[-]	[W]	[W]	[W]	[mm]		
<b>DXCO 1500 0370</b>	<b>70</b>	<b>18,9</b>	<b>13,2</b>	<b>1,280</b>	<b>724</b>	-	-	<b>50</b>	✓	-
<b>DXCO 1800 0370</b>	<b>70</b>	<b>22,4</b>	<b>16,2</b>	<b>1,280</b>	<b>861</b>	-	-	<b>50</b>	✓	-

The weight of radiators does not include water and packaging.

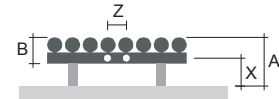
## Type height (H) / length (L) [mm]



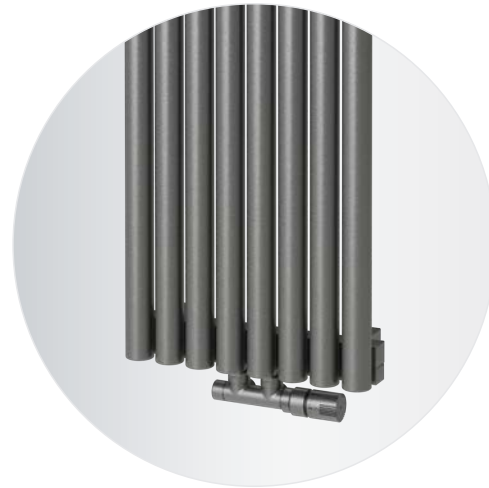
H: 1500  
L: 0370

H: 1800  
L: 0370

## Mounting



Type	X [mm]	A [mm]
<b>Metal brackets</b>	<b>74-84</b>	<b>129-139</b>



Corint Inox

Corint Inox