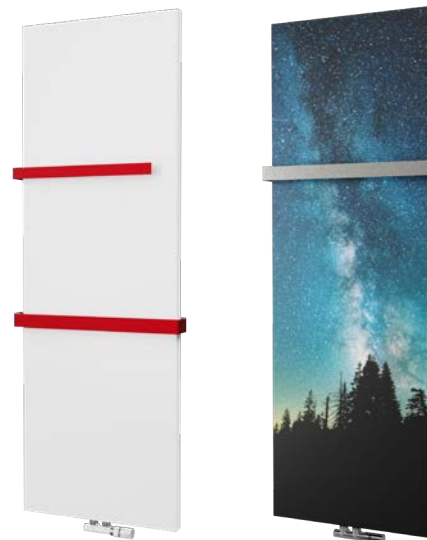


Variant Variant Photo

Vertically-mounted heating units featuring a minimalist design and high heat output. The stainless steel covers of Variant units offer a wide range of colour and printed motif to ensure that each unit is perfectly integrated with the interior.

Material	steel pipes Ø 28 mm steel profiles 70×11 mm steel cover
Connection threads	2xG1/2"
Testing overpressure	0,65 MPa
Max. op. overpressure	0,5 MPa
Max. operating temperature	95 °C



1.

2.



3.

1. Variant - Snow/traffic white RAL 9016 [01] with rails - Fiery red RAL 3002 [08] / 2. Variant Photo - Motif with a two sided stainless steel rail / 3. Variant Photo - Motif [P01]

Modification options

Surface treatment	
Height range [mm]	
Length range [mm]	
Change dimension	
Electric version	
Middle connection (SM)	
Side connection (SB)	
One-sided into space fixing	




Variant

colour	
506-2 006 (increase of 50)	
304-988 (increase of 76)	
additional charge 30 % ¹⁾	
NO	
STANDARD	
NO	
NO	

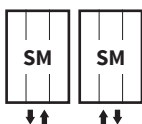
Variant Photo

motif coating	
506-2 006 (increase of 50)	
304-988 (increase of 76)	
additional charge 30 % ¹⁾	
NO	
STANDARD	
NO	
NO	

Accessories

-  Colour ref. chart page 115
-  Bath. accessories page 100
-  Thermostatic packs page 102

Connection Options



The type of connection must be specified in the order; for more information see page 112, positions 13 and 14./¹⁾ to the nearest larger standard dimension

Variant



Height (H) Length (L) [mm]	Depth (B)	Weight	Water capacity	Temperature exponent	Output 75/65/20°C	Power input	Connection span (Z)	White colour RAL 9016	Electric
code	[mm]	[kg]	[l]	[-]	[W]	[W]	[mm]		
DVAR 1206 0456	40	27,7	5,6	1,214	482	-	50	✓	-
DVAR 1806 0608	40	44,5	8,2	1,255	1027	-	50	✓	-

Ordering procedure page 112 / The weight of radiators is listed without water and package.

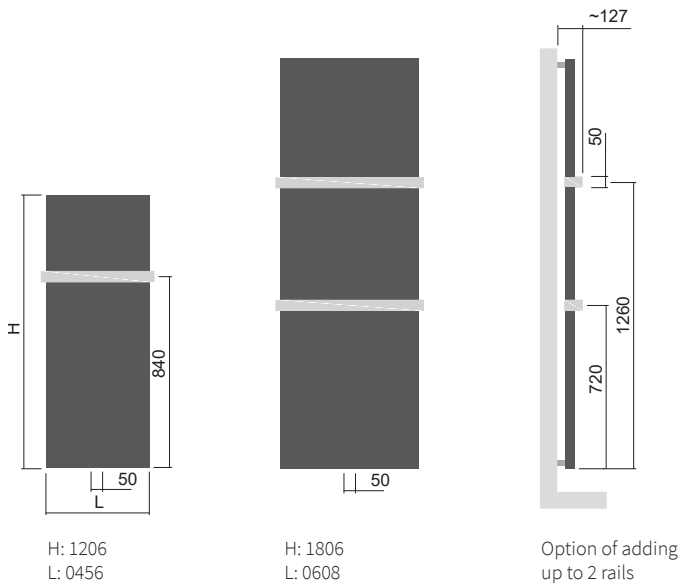
Variant Photo



Height (H) Length (L) [mm]	Depth (B)	Weight	Water capacity	Temperature exponent	Output 75/65/20°C	Power input	Connection span (Z)	Motif*	Electric
code	[mm]	[kg]	[l]	[-]	[W]	[W]	[mm]		
DVAR 1206 0456 SM96	40	27,7	5,6	1,214	482	-	50	✓	-
DVAR 1806 0608 SM96	40	44,5	8,2	1,255	1027	-	50	✓	-

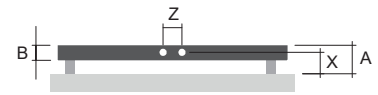
*To be specified in the order: Motif. / For ordering procedure see page 112 / The weight of radiators does not include water and packaging.

Type height (H) / length (L) [mm]



One rail is suitable for radiators installed 806 mm above the floor level and higher, while two rails 1 206 mm and higher.

Mounting



Type	X [mm]	A [mm]
Metal brackets	54-64	80-90

Variant Photo



Motif example P19

Placing an order for a theme coated radiator

1. Selection and specification of the radiator and the theme
2. Mailing of the graphic design in optimal resolution
3. Approval of the offer
4. Manufacture and delivery of the radiator

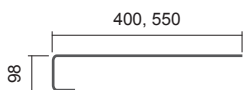
Featured themes see



Painted rails are also available in colour variations as per the ISAN colour chart at an extra charge.

Rails

Variant / Variant Photo

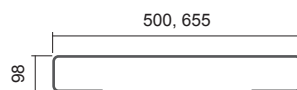


One-sided brushed stainless steel rails

Length [mm]	Code
456	O15MN81-40
608	O15MN81-41

One-sided rail - painted RAL 9016

Length [mm]	Code
456	O15MN01-40
608	O15MN01-41



Two-sided brushed stainless steel rails

Length [mm]	Code
456	O15MN81-02
608	O15MN81-03

Two-sided polished stainless steel rail

Length [mm]	Code
456	O15MN87-02
608	O15MN87-03

Two-sided rail - painted RAL 9016

Length [mm]	Code
456	O15MN01-02
608	O15MN01-03