

Variant Cool Variant Mirror

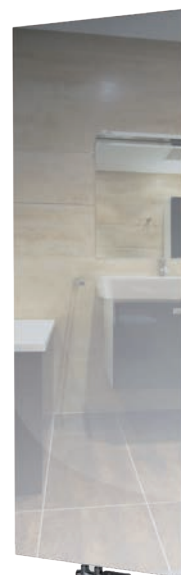
Variant Cool - matt tempered safety glass conceals the efficient steel profiles ensuring fast heating and high heat output.

Variant Mirror - a mirror which will warm you up and optically enlarge the space. Both models can be fitted with up to two rails in a polished or brushed stainless steel design.

Material	steel pipes Ø 28 mm steel profiles 70×11 mm
Cool Mirror	designer hardened safety glass 6 mm whole area mirror, thickness 4 mm
Connection threads	2xG1/2"
Testing overpressure	0,65 MPa
Max. op. overpressure	0,5 MPa
Max. operating temperature	95 °C



1.



2.



3.

1. Variant Cool with a two-sided rail / 2. Variant Mirror / 3. Variant Cool

Modification options

Surface treatment	
Height range [mm]	
Length range [mm]	
Dimension changes	
Electric version	
Middle connection (SM)	
Side connection (SB)	
One-sided into space fixing	




Variant Cool

glass	
NO	
NO	
NO	
NO	
STANDARD	
NO	
NO	

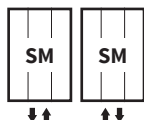
Variant Mirror

mirror	
506-2 006 (increase of 50)	
304-988 (increase of 76)	
additional charge 30 % ¹⁾	
NO	
STANDARD	
NO	
NO	

Accessories

-  Colour ref. chart page 115
-  Bath. accessories page 100
-  Thermostatic packs page 102

Connection Options



The type of connection must be specified in the order; for more information see page 112, positions 13 and 14. ¹⁾ to the nearest larger standard dimension

Variant Cool



Height (H) Length (L) [mm]	Depth (B)	Weight	Water capacity	Temperature exponent	Output 75/65/20°C	Power input	Connection span (Z)	Glass*
code	[mm]	[kg]	[l]	[-]	[W]	[W]	[mm]	
DVCL 1806 0608 SM01	47	61,4	8,2	1,148	936	-	50	✓

Variant Mirror

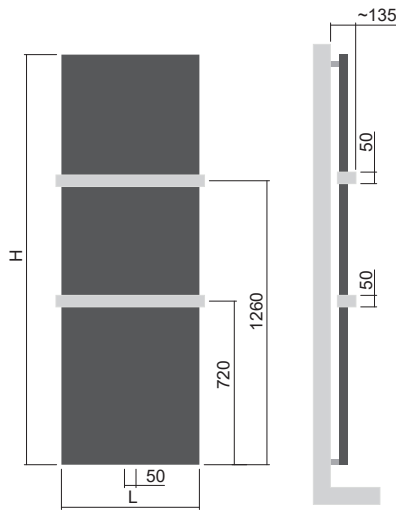


Height (H) Length (L) [mm]	Depth (B)	Weight	Water capacity	Temperature exponent	Output 75/65/20°C	Power input	Connection span (Z)	Mirror**
code	[mm]	[kg]	[l]	[-]	[W]	[W]	[mm]	
DVMR 1806 0456 SM61	45	42,5	6,1	1,124	688	-	50	✓
DVMR 1806 0608 SM61	45	55,9	8,2	1,124	917	-	50	✓

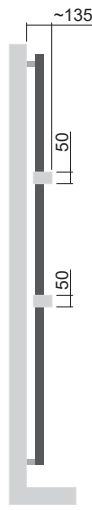
For ordering procedure see page 112 / The weight of radiators does not include water and packaging. / *Basic paint on back is the Snow /traffic white RAL 9016/ **Basic paint on back is the Anthracite S02.

Type height (H) / length (L) [mm]

Variant Cool



H: 1806
L: 0608

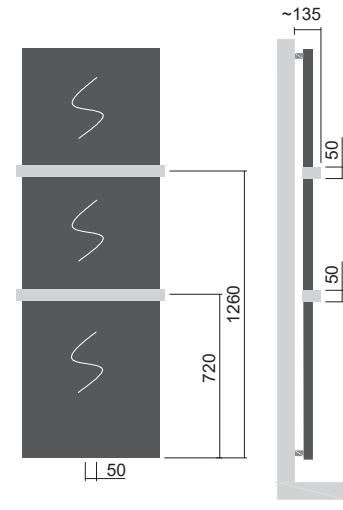


Option of adding up to 2 rails

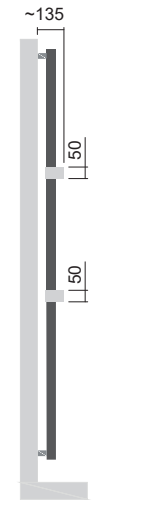
Variant Mirror



H: 1806
L: 0456



H: 1806
L: 0608



Option of adding up to 2 rails

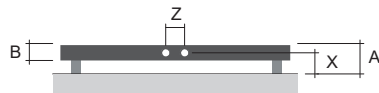
One rail is suitable for radiators installed 806 mm above the floor level and higher, while two rails 1 206 mm and higher.

Variant Cool / Mirror

21

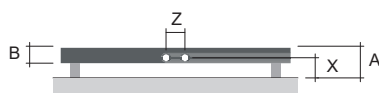
Mounting

Variant Cool



Type	X [mm]	A [mm]
Metal brackets	54-64	87-97

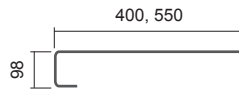
Variant Mirror



Type	X [mm]	A [mm]
Metal brackets	54-64	84-94

Rails

Variant Cool / Variant Mirror

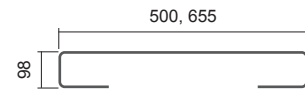


One-sided brushed stainless steel rails

Length [mm]	Code
456	O15MN81-40
608	O15MN81-41

One-sided rail - painted RAL 9016

Length [mm]	Code
456	O15MN01-40
608	O15MN01-41



Two-sided brushed stainless steel rails

Length [mm]	Code
456	O15MN81-02
608	O15MN81-03

Two-sided polished stainless steel rail

Length [mm]	Code
456	O15MN87-02
608	O15MN87-03

Two-sided rail - painted RAL 9016

Length [mm]	Code
456	O15MN01-02
608	O15MN01-03

Painted rails are also available in colour variations as per the ISAN colour chart at an extra charge.