

Palmyra Chrom

A reliable and stylish radiator with a subtle chrome finish for all who settle for nothing less than premium quality.

Material	steel pipes Ø 22 mm steel profiles D35×41 mm
Connection threads	4×G1/2"
Testing overpressure	1,3 MPa
Max. op. overpressure	1,0 MPa
Max. operating temperature	95°C
Number of pipes	24, 32, 37



1.



1. Palmyra Chrom / 2. Palmyra Chrom with a middle connection

Modification options

Surface treatment	chrome
Height range [mm]	335-1 775 (increase of 40)
Length range [mm]	300-750 (increase of 10)
Dimension changes	additional charge 30 % ¹⁾
Electric version	YES (additional charge)
Standard connection (SK)	STANDARD
Middle connection (SM a SD)	YES (additional charge)
Side connection (SB)	YES (additional charge)
One-sided into space fixing	YES (additional charge)

Palmyra Chrom

Accessories

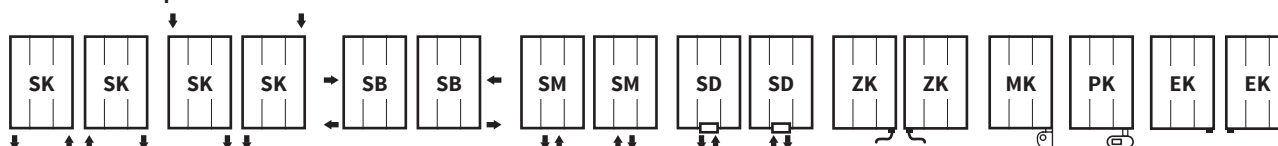


Thermostatic packs page 102



Electric regulators page 108

Connection Options



The type of connection must be specified in the order; for more information see page 112, positions 13 and 14./¹⁾ to the nearest larger standard dimension

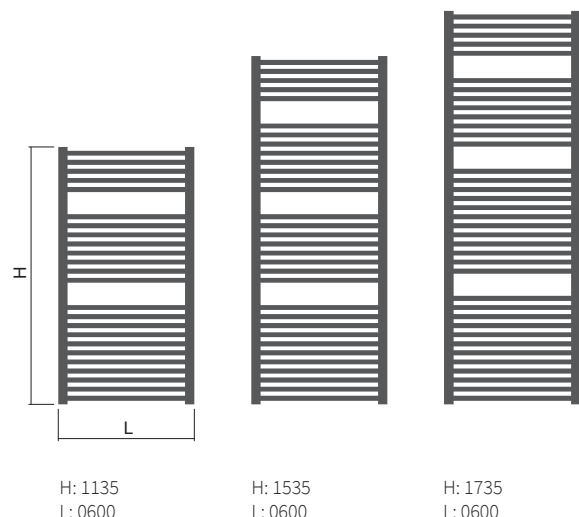
Palmyra Chrom



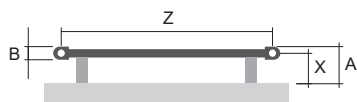
Height (H) Length (L) [mm]	Depth (B)	Weight	Water capacity	Temperature exponent	Output chrom 75/65/20°C	Power input Z heat. rod, Mini PW, Vision	Power input Solo, Rio, Neo	Connection span (Z)	Chrom	Electric
code	[mm]	[kg]	[l]	[-]	[W]	[W]	[W]	[mm]		
DPAL 1135 0600	35	11,5	6,7	1,260	499	500	400	559	✓	✓
DPAL 1535 0600	35	15,4	9,0	1,260	668	700	600	559	✓	✓
DPAL 1735 0600	35	17,6	10,3	1,260	767	800	800	559	✓	✓

For ordering procedure see page 112 / The weight of radiators does not include water and packaging.

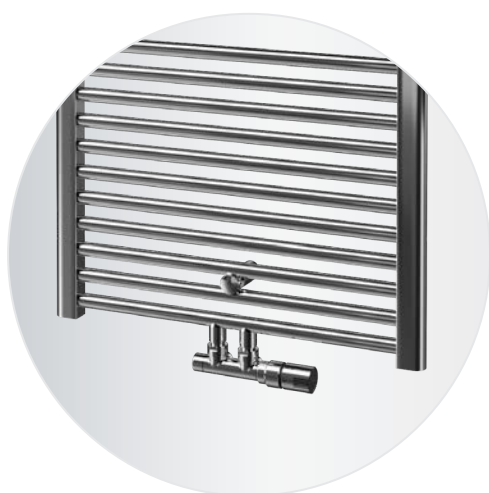
Type height (H) / length (L) [mm]



Mounting



Type	X [mm]	A [mm]
Plastic brackets (chrome)	81-91	99-109



Palmyra Chrom - middle connection [SM]



Palmyra Chrom - middle connection with cover [SD]