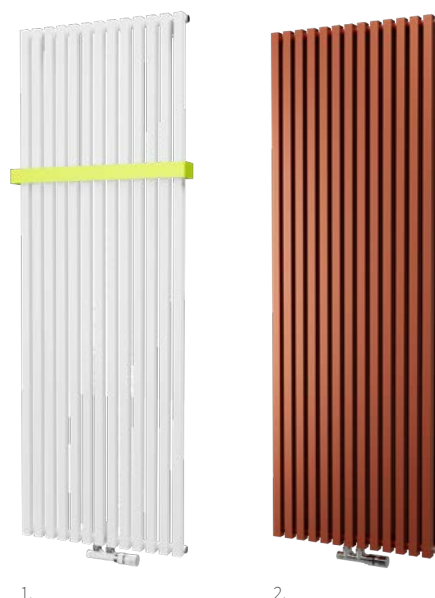


# Octava

## Octava Double

Octava and Octava Double models rank among high-performance designer radiators. They are suitable for all modern residential and office settings.

Material	steel pipes Ø 28 mm steel profiles 30×30 mm
Connection threads	2xG1/2"
Testing overpressure	1,3 MPa
Max. op. overpressure	1,0 MPa
Max. operating temperature	110 °C
Number of profiles Octava	7, 10, 13
Number of profiles Octava Double	14, 20, 26



Octava / Octava Double



1. Octava - Snow/traffic white RAL 9016 [01] with a rail / 2. Octava Double - Cooper S03 [62] / 3. Octava - Dark grey S38 [50]

### Modification options

Surface treatment
Height range [mm]
Length range [mm]
Dimension changes
Electric version
Middle connection (SM)
Side connection (SB)
One-sided into space fixing

### Octava

colour
600-2 000 (increase of 10)
318-990 (increase of 48)
additional charge 30% <sup>1)</sup>
NO
STANDARD
YES (additional charge)
NO

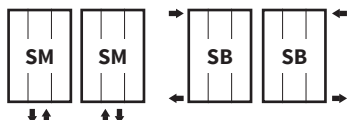
### Octava Double

colour
600-2 000 (increase of 10)
318-606 (increase of 48)
additional charge 30% <sup>1)</sup>
NO
STANDARD
YES (additional charge)
NO

### Accessories

- Colour ref. chart page 115
- Bath. accessories page 100
- Thermostatic packs page 102

### Connection Options



The type of connection must be specified in the order; for more information see page 112, positions 13 and 14./<sup>1)</sup> to the nearest larger standard dimension

# Octava



Height (H) Length (L) [mm]	Depth (B)	Weight	Water capacity	Temperature exponent	Output 75/65/20°C	Power input	Connection span (Z)	White colour RAL 9016	Electric
code	[mm]	[kg]	[l]	[-]	[W]	[W]	[mm]		
DOCT 1500 0318	58	15,4	7,9	1,292	669	-	50	✓	-
DOCT 1500 0462	58	21,9	11,3	1,292	940	-	50	✓	-
DOCT 1500 0606	58	27,1	14,6	1,292	1203	-	50	✓	-
DOCT 1800 0318	58	18,5	9,4	1,268	791	-	50	✓	-
DOCT 1800 0462	58	26,0	13,5	1,268	1 112	-	50	✓	-
DOCT 1800 0606	58	34,0	17,5	1,268	1 423	-	50	✓	-

# Octava Double

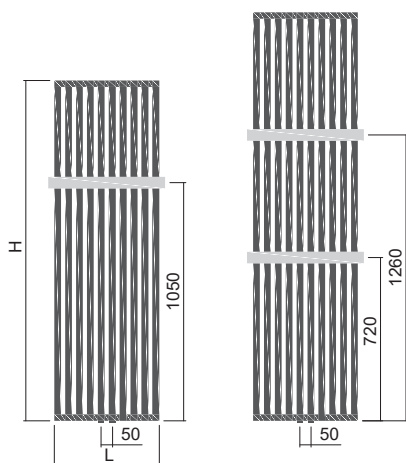


Height (H) Length (L) [mm]	Depth (B)	Weight	Water capacity	Temperature exponent	Output 75/65/20°C	Power input	Connection span (Z)	White colour RAL 9016	Electric
code	[mm]	[kg]	[l]	[-]	[W]	[W]	[mm]		
DOCD 1800 0318	86	36,0	18,6	1,284	1 181	-	50	✓	-
DOCD 1800 0462	86	51,3	26,5	1,284	1 645	-	50	✓	-
DOCD 1800 0606	86	66,7	34,6	1,284	2 093	-	50	✓	-

For ordering procedure see page 112 / The weight of radiators does not include water and packaging.

## Type height (H) / length (L) [mm]

### Octava / Octava Double



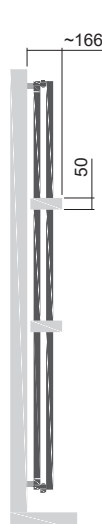
H: 1500  
L: 0318-0606

H: 1800  
L: 0318-0606

### Octava



### Octava Double



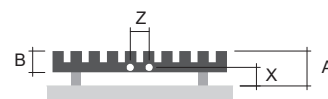
Option of adding up to 2 rails

One rail is suitable for radiators installed 800 mm above the floor level and higher, while two rails are suitable for radiators installed 1 200 mm and higher.

The two-sided rails must be installed on the radiator prior to mounting it on the wall.

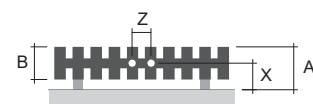
## Mounting

### Octava



Type	X [mm]	A [mm]
Metal brackets	54-64	97-107

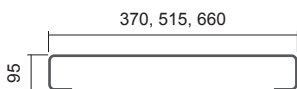
### Octava Double



Type	X [mm]	A [mm]
Metal brackets	83-93	126-136

## Rails

### Octava



#### Two-sided brushed stainless steel rails

Length [mm]	Code
318	O15MN81-14
462	O15MN81-15
606	O15MN81-16

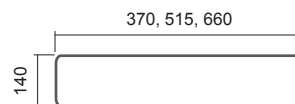
#### Two-sided polished stainless steel rail

Length [mm]	Code
318	O15MN87-14
462	O15MN87-15
606	O15MN87-16

#### Two-sided rail - painted RAL 9016

Length [mm]	Code
318	O15MN01-14
462	O15MN01-15
606	O15MN01-16

### Octava Double



#### Two-sided brushed stainless steel rails

Length [mm]	Code
318	O15MN81-17
462	O15MN81-18
606	O15MN81-19

#### Two-sided polished stainless steel rail

Length [mm]	Code
318	O15MN87-17
462	O15MN87-18
606	O15MN87-19

#### Two-sided rail - painted RAL 9016

Length [mm]	Code
318	O15MN01-17
462	O15MN01-18
606	O15MN01-19

Painted rails are also available in colour variations as per the ISAN colour chart at an extra charge.