

# Nias

The steel sections of Nias radiators are arranged into staggered wave patterns to refract light and create unique interior decoration, ideal for restaurants, hotels and residential and commercial settings.

Material	steel pipes Ø 28 mm steel profiles 70×11 mm
Connection threads	2 × G1/2"
Testing overpressure	0,65 MPa
Max. op. overpressure	0,5 MPa
Max. op. temperature	95 °C



1.



2.

1. Nias - Gold olive texture S28 [22] with a one-sided rail / 2. Nias - Light grey texture S37 [49]




## Modification options

Surface treatment	
Height range [mm]	
Length range [mm]	
Electric version	
Middle connection (SM)	
Side connection (SB)	
One-sided into space fixing	

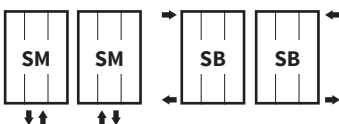
## Nias

colour structure	
NO	
NO	
NO	
STANDARD	
YES (additional charge)	
NO	

## Accessories

-  Colour ref. chart page 115
-  Bath. accessories page 100
-  Thermostatic packs page 102

## Connection Options



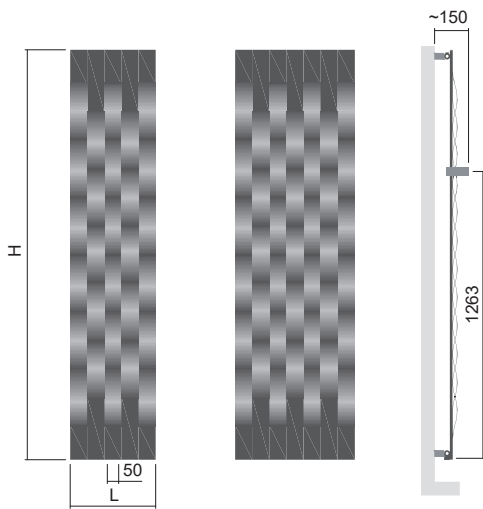
The type of connection must be specified in the order, for more information see page 112, positions 13 and 14.



Height (H) Length (L) [mm]	Depth (B)	Weight	Water capacity	Temperature exponent	Output 75/65/20°C	Power input	Connection span (Z)	Colour structure	Electric
code	[mm]	[kg]	[l]	[-]	[W]	[W]	[mm]		
<b>DNIA 1806 0377</b>	<b>60</b>	<b>26,7</b>	<b>5,1</b>	<b>1,272</b>	<b>671</b>	-	<b>50</b>	✓	-
<b>DNIA 1806 0528</b>	<b>60</b>	<b>37,4</b>	<b>7,2</b>	<b>1,316</b>	<b>934</b>	-	<b>50</b>	✓	-

For ordering procedure see page 112 / The weight of radiators does not include water and packaging / The Nias radiator is only available in colour variations with a structured surface, see the colour chart.

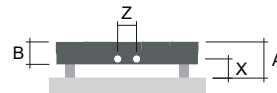
## Type height (H) / length (L) [mm]



H: 1806  
L: 0377

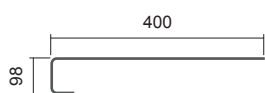
H: 1806  
L: 0528

## Mounting



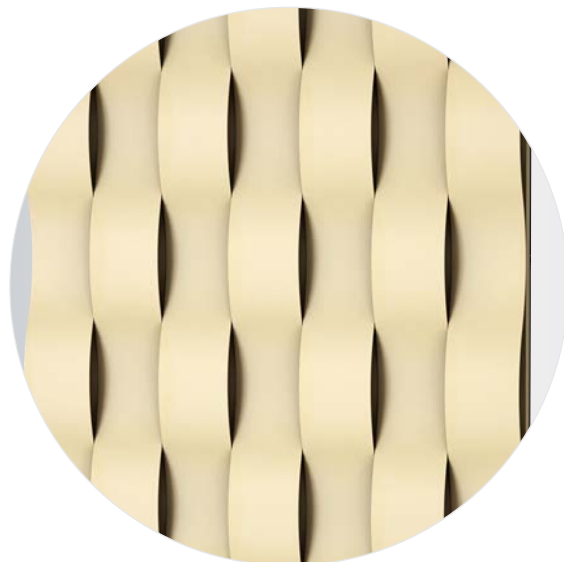
Type	X [mm]	A [mm]
<b>Metal brackets</b>	<b>54-64</b>	<b>100-110</b>

## Rails



### One-sided brushed stainless steel rails

Length [mm]	Code
<b>528</b>	<b>O15MN81-40</b>



Nias - Ivory texture S08 [67]