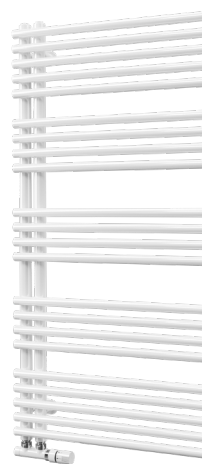


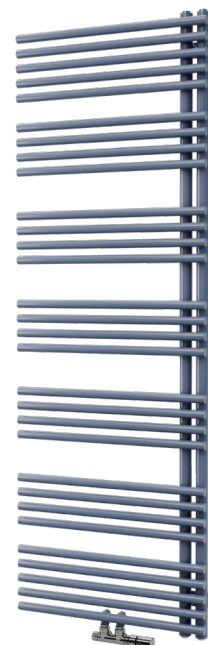
Calypso

A subtle, stylish and refined designer piece. That is how you could describe our radiator, which captivates you at first glance by its elegance and symmetrical arrangement of profiles. It will perfectly complement your bathroom, turning it into a cozy space for you to enjoy a relaxing time after a stressful day. A convenient design for warming fabrics.

Material	steel pipes Ø 35 mm steel pipes Ø 25 mm
Connection threads	4xG1/2"
Testing overpressure	1,3 MPa
Max. op. overpressure	1,0 MPa
Max. op. temperature	110 °C
Number of pipes	18, 22, 26, 30



1.



2.



1. Calypso (connection SK) - snow/traffic white RAL 9016 [01] / 2. Calypso (connection SM) - pigeon blue RAL 5014 [07] / 3. Calypso electric with reg. Rio chrome – sapphire S30 [24]

Modification options

Surface treatment
Height range [mm]
Length range [mm]
Electric version
Standard connection (SK)
Middle connection (SM)
Side connection (SB)
One-sided into space fixing




Calypso (SK)

colour
NO
NO
YES (code DCAL, DCAP)*
STANDARD (DCAL-left and right design)
NO
NO
NO

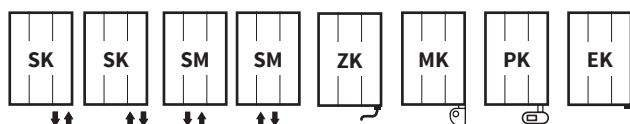
Calypso (SM)

colour
NO
NO
NO
NO
STANDARD (code DCAL, DCAP)
NO
NO

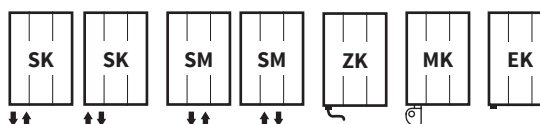
Accessories

-  Colour ref. chart page 115
-  Thermostatic packs page 102
-  Electric regulators page 108

Connection Options - left design



right design



The type of connection must be specified in the order; for more information see page 112, positions 13 and 14./ *additional charge

Calypso / standard connection (SK)



Height (H)	Length (L) [mm]	Depth (B)	Weight	Water capacity	Temperature exponent	Output 75/65/20°C	Power input Z heat. rod, Mini PW, Vision	Power input Solo, Rio, Neo	Connection span (Z)	White colour RAL 9016	Electric*
kód	[mm]	[kg]	[l]	[-]	[W]	[W]	[W]	[W]	[mm]		
DCAL 0982 0500	60	10,8	5,0	1,345	425	400	400	50	✓	✓	
DCAL 0982 0600	60	12,4	5,6	1,345	489	500	400	50	✓	✓	
DCAL 1246 0500	60	13,7	6,1	1,345	522	500	600	50	✓	✓	
DCAL 1246 0600	60	15,7	7,0	1,345	600	600	600	50	✓	✓	
DCAL 1510 0500	60	16,3	7,3	1,345	621	600	600	50	✓	✓	
DCAL 1510 0600	60	18,7	8,3	1,345	713	700	800	50	✓	✓	
DCAL 1774 0500	60	18,8	8,5	1,345	720	700	800	50	✓	✓	
DCAL 1774 0600	60	21,6	9,6	1,345	826	800	800	50	✓	✓	

How to order - for the version of the body for the central heating system with SK connection, it is not necessary to define a left or right design.
*For the electro-right design, the code must be changed to DCAP.

Calypso / middle connection (SM)

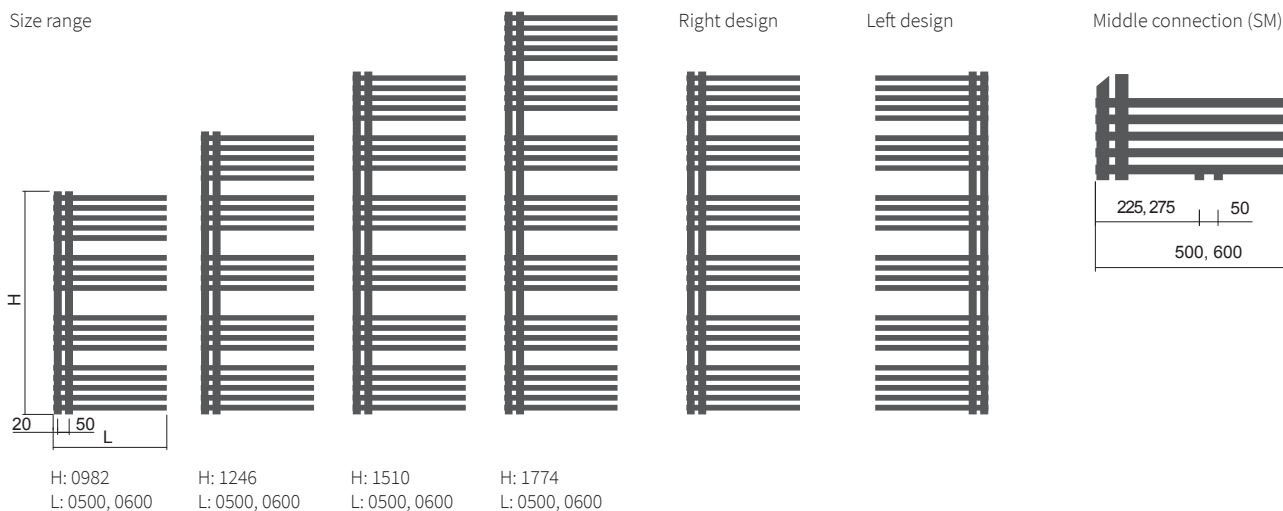


Height (H)	Length (L) [mm]	Depth (B)	Weight	Water capacity	Temperature exponent	Output 75/65/20°C	Power input Z heat. rod, Mini PW, Vision	Power input Solo, Rio, Neo	Connection span (Z)	White colour RAL 9016	Electric
kód	[mm]	[kg]	[l]	[-]	[W]	[W]	[W]	[W]	[mm]		
DCAL / DCAP 0982 0500	60	10,8	5,0	1,345	425	400	400	50	✓	-	
DCAL / DCAP 0982 0600	60	12,4	5,6	1,345	489	500	400	50	✓	-	
DCAL / DCAP 1246 0500	60	13,7	6,1	1,345	522	500	600	50	✓	-	
DCAL / DCAP 1246 0600	60	15,7	7,0	1,345	600	600	600	50	✓	-	
DCAL / DCAP 1510 0500	60	16,3	7,3	1,345	621	600	600	50	✓	-	
DCAL / DCAP 1510 0600	60	18,7	8,3	1,345	713	700	800	50	✓	-	
DCAL / DCAP 1774 0500	60	18,8	8,5	1,345	720	700	800	50	✓	-	
DCAL / DCAP 1774 0600	60	21,6	9,6	1,345	826	800	800	50	✓	-	

For ordering procedure see page 112 / The weight of radiators does not include water and packaging.

Type height (H) / length (L) [mm]

Size range

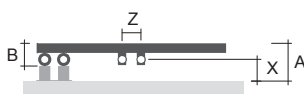


Mounting

Standard connection (SK)

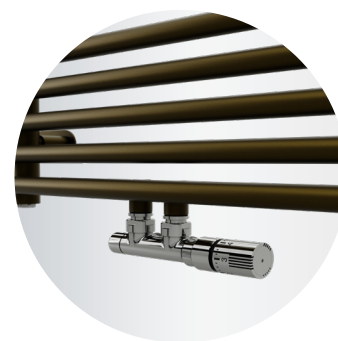


Middle connection (SM)



Typ X [mm] A [mm]
Metal brackets 57,5-67,5 100-110

Typ X [mm] A [mm]
Metal brackets 57,5-67,5 100-110



Calypso with a middle connection - gold olive S28