



**Design Radiators** by ISAN

# Akros One

An original modular solution that impresses with its design and functionality. This single-pipe heater is also available in an electric version, adding style to modern interiors.



connection sets  
→ 146



electric regulators  
→ 154



colour ref. chart  
→ 159





# Akros One



Code	Depth (B)	Weight	Water capacity	Temperature exponent	Output 75/65/20°C	Power input	Connection span	White colour RAL 9016	Electric
Height (H) / Length (L) [mm]	[mm]	[kg]	[l]	[-]	[W]	[W]	[mm]		
DAKO 1800 0050	68	4,5	3,1	1,280	131	400	-	✓	✓

For ordering procedure see page 160 / The weight of radiators does not include water and packaging.

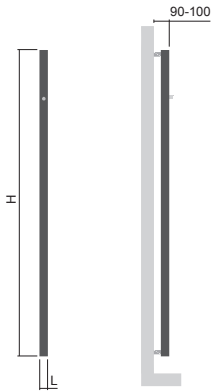
## Technical information

Material	steel pipe ø 50 mm
Connection threads	2xG1/2"
Testing overpressure	0,65 MPa
Max. operating overpressure	0,5 MPa
Max. operating temperature	95 °C
Number of pipes	1
Number of hooks	1

## Modification options

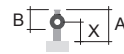
Surface treatment	colour
Height range [mm]	NO
Length range [mm]	NO
Change of dimensions	NO
Electric version	YES (additional charge)
Middle connection (SM)	NO
Standard connection (SK)	STANDARD
Side connection (SB)	NO
One-sided into space fixing	NO

## Type height (H) / length (L) [mm]



H 1800  
L 0050

## Mounting



Type	X [mm]	A [mm]
Metal brackets	65-75	108-118

## Connection options



The type of connection must be specified in the order; for more information see page 160, positions 13 and 14.



Regulator Rio